

A decorative graphic on the left side of the slide, consisting of a network of light blue lines and circles that resemble a circuit board or a data network. The lines are of varying thickness and connect to small circles, creating a complex, branching pattern that extends from the top to the bottom of the page.

TAMPER EVIDENT BYPASSES

BY MOS AND BOO

THE PACKAGING COUNCIL OF AUSTRALIA

“Packaging which possesses a barrier to entry which, if breached or missing, will provide visible evidence to consumers that tampering had occurred”



MESOPOTAMIAN CYLINDER SEAL

Made from volcanic rock dated around 3000 B.C. which was rolled across clay tablets.

Source 516 American Scientist, Volume 94.

THERE ARE FIVE BASIC TYPES OF TAMPER EVIDENT LABELS, THESE ARE:

- Non-transfer labels;
- Total transfer labels;
- Egg shell labels;
- Tamper evident security tape; and
- Security tape used to seal envelopes.

NON-TRANSFER LABELS



NON-TRANSFER LABEL REMOVAL



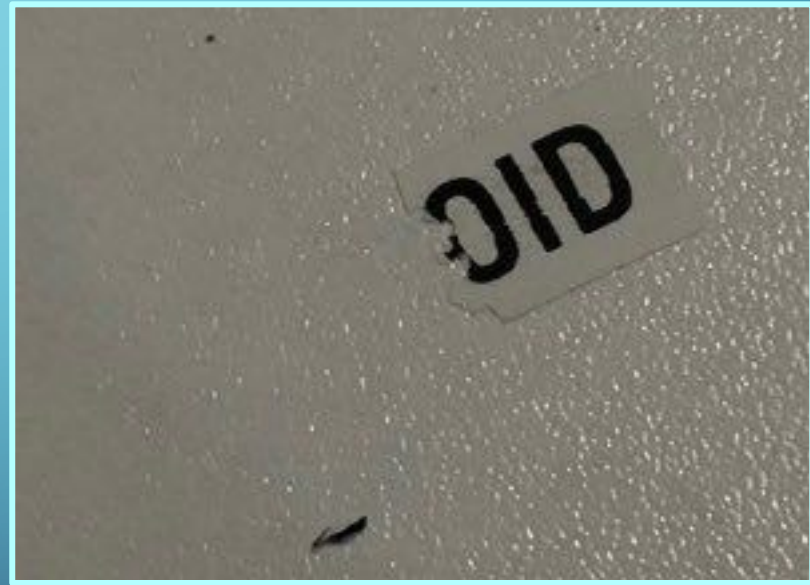
TOTAL TRANSFER LABELS



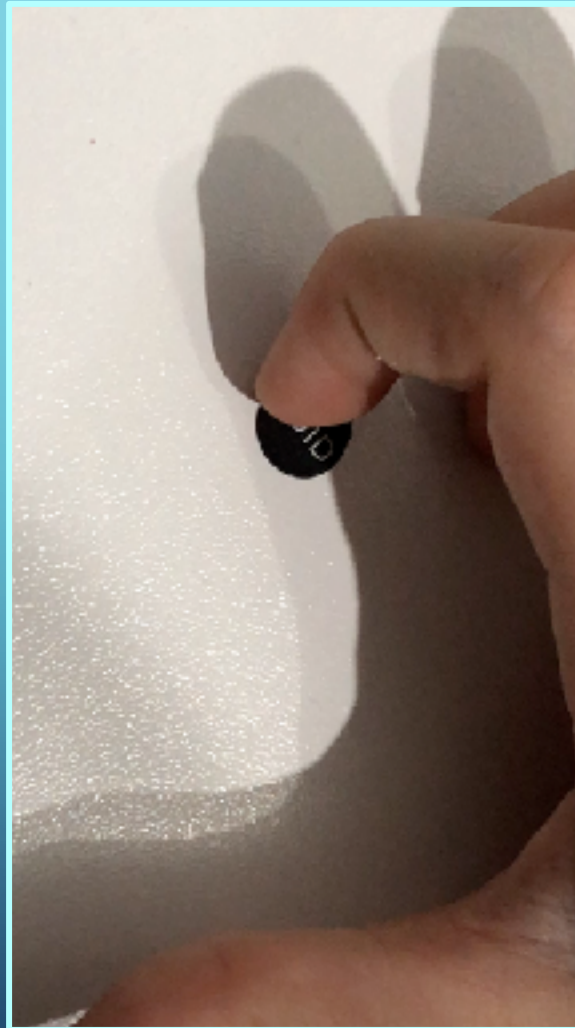
TOTAL TRANSFER LABEL REMOVAL



EGG SHELL LABELS



EGG SHELL LABEL REMOVAL



SECURITY TAPE



Photo from bsealed.com.au. Ours didn't arrive in time to test.

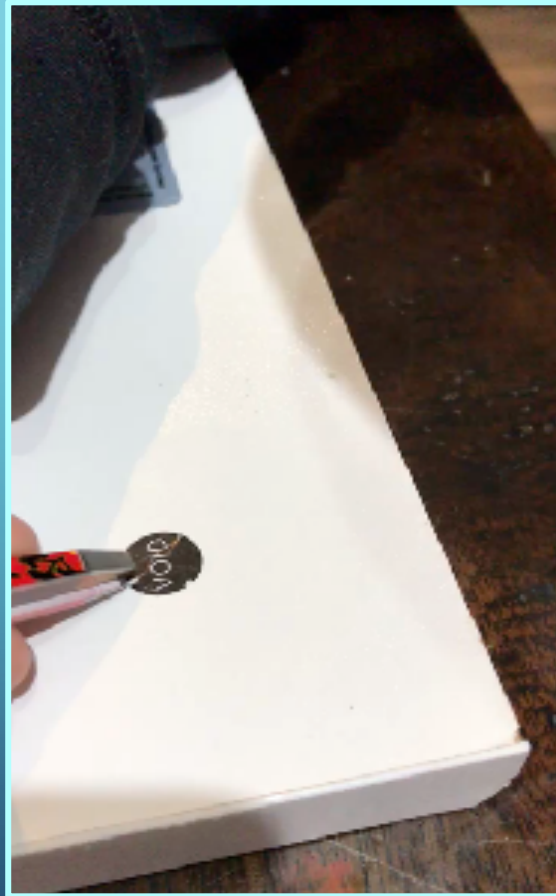
TAMPER EVIDENT ENVELOPES



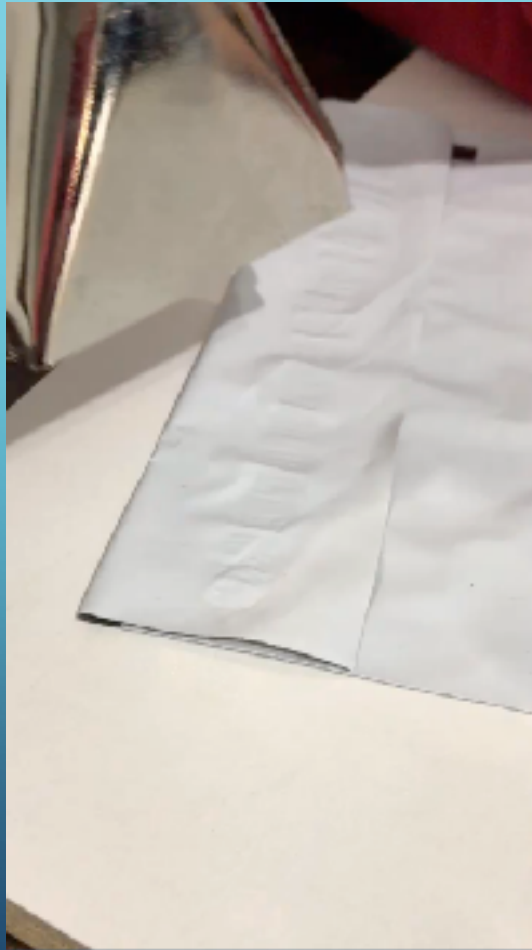
OUR RESULTS

Label	Chemical - Shellite and Isopropyl Alcohol	Heat	Cold
Non-Transfer	√	√	√ and x
Total Transfer	√	√	√ and x
Egg-Shell	√	√	X
Security Envelopes	x	√ and x	x
Security Tape	Dumb Shop	Didn't Sent it	On Time!

EGG SHELL LABEL REMOVAL (AFTER FREEZING)



SECURITY ENVELOPES (A VERY EASY ONE)



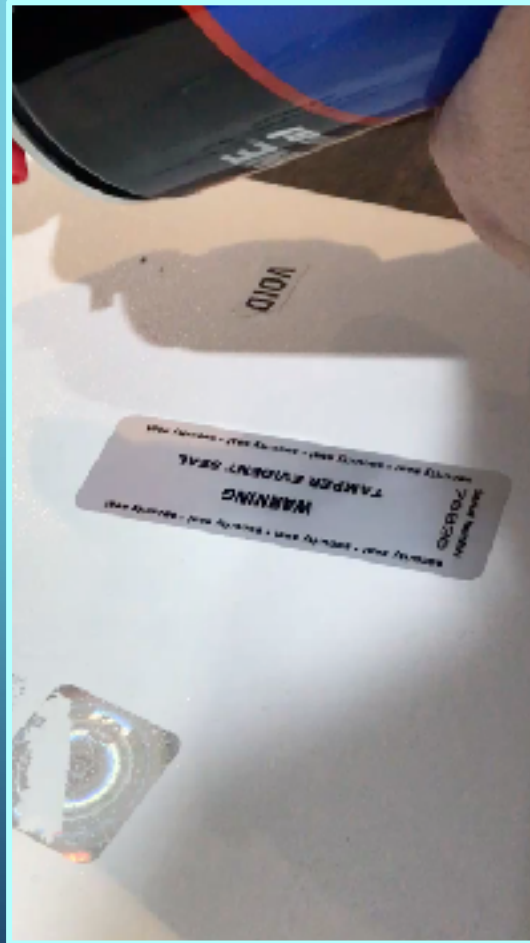
THIS IS A BAG THAT HAS HAD EVERYTHING DONE TO IT!



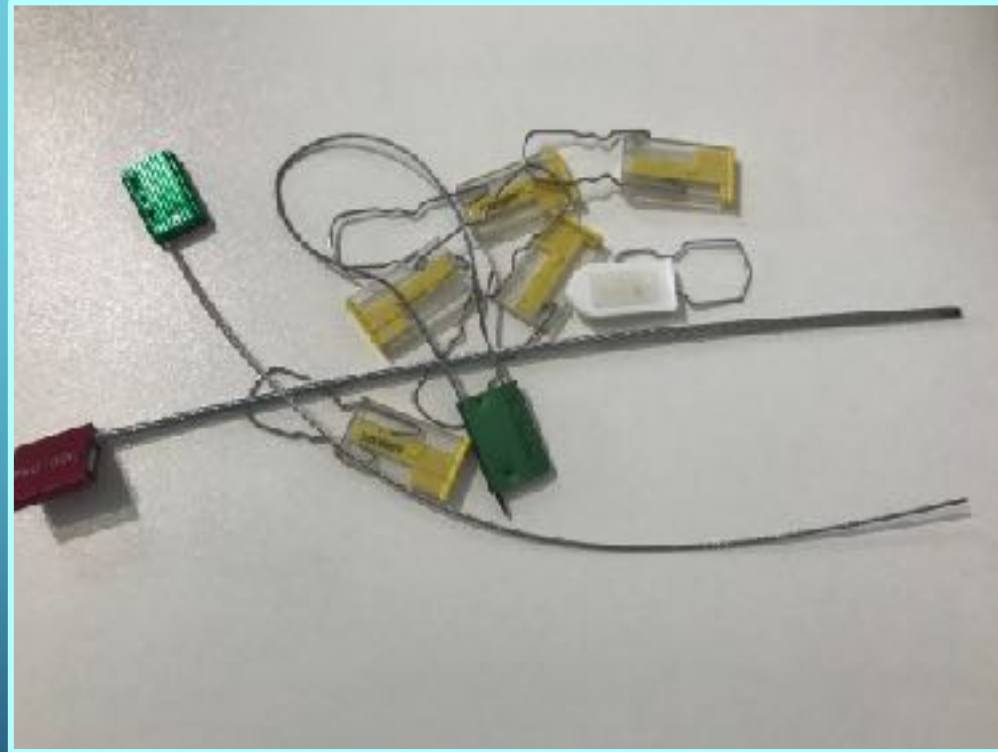
BOO USING A SYRINGE FULL OF SHELLITE AT OZLOCKCON 2017



USING AN UPSIDE DOWN BOTTLE OF AIR (COLD)



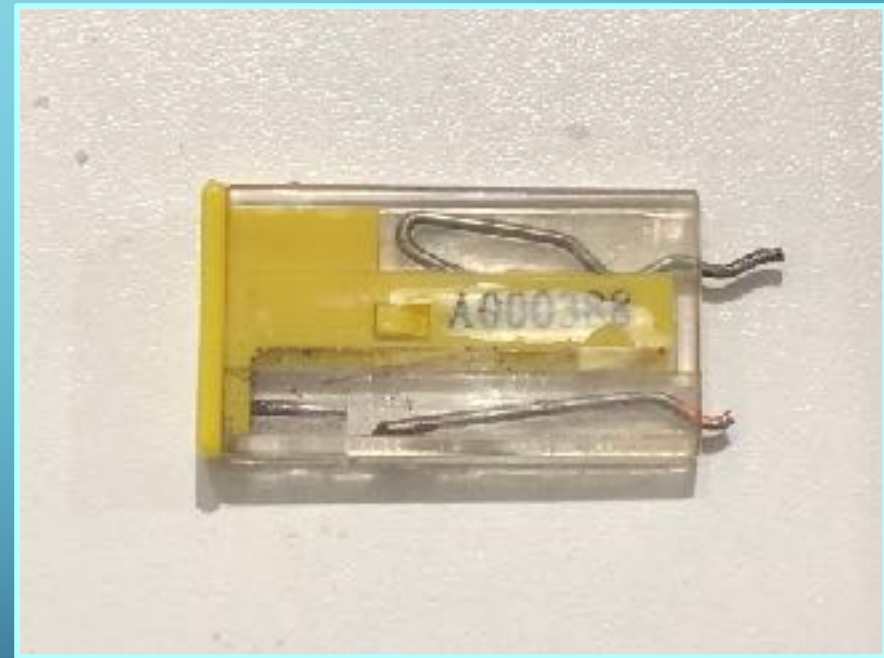
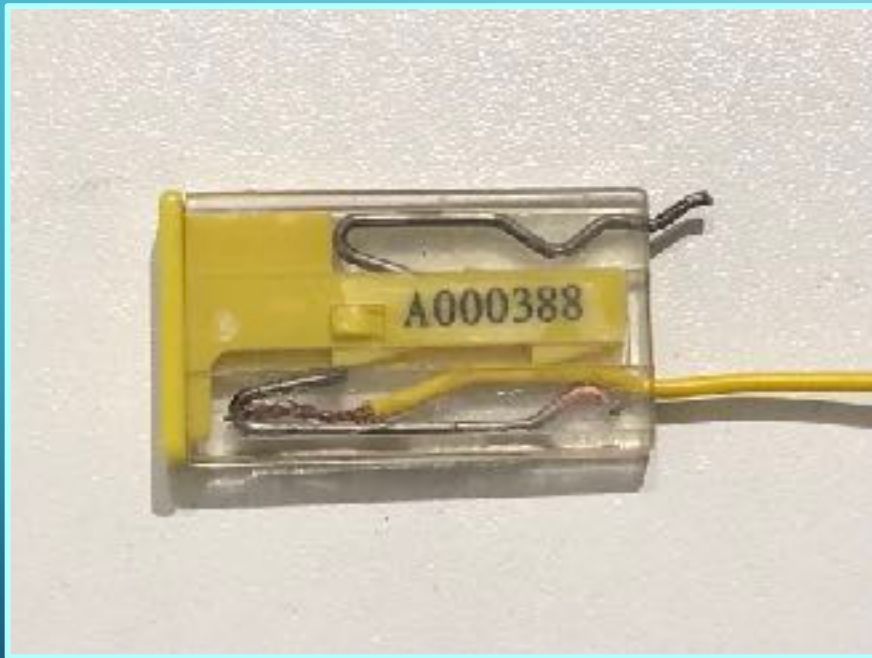
PAD LOCK SEALS



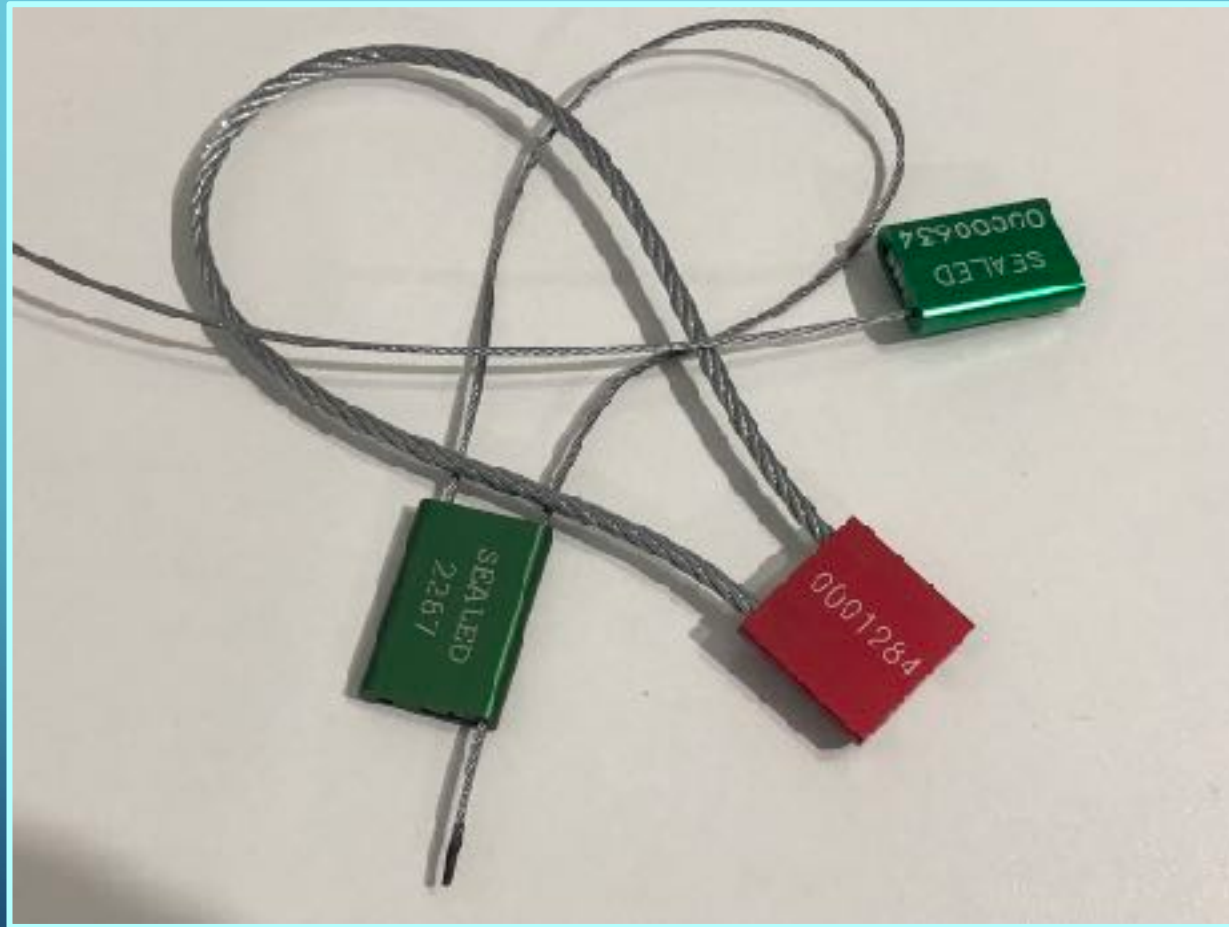
OUR FIRST ATTEMPT TO CORRODE PADLOCK SEALS



HERE IS HOW YOU MAKE IT WORK



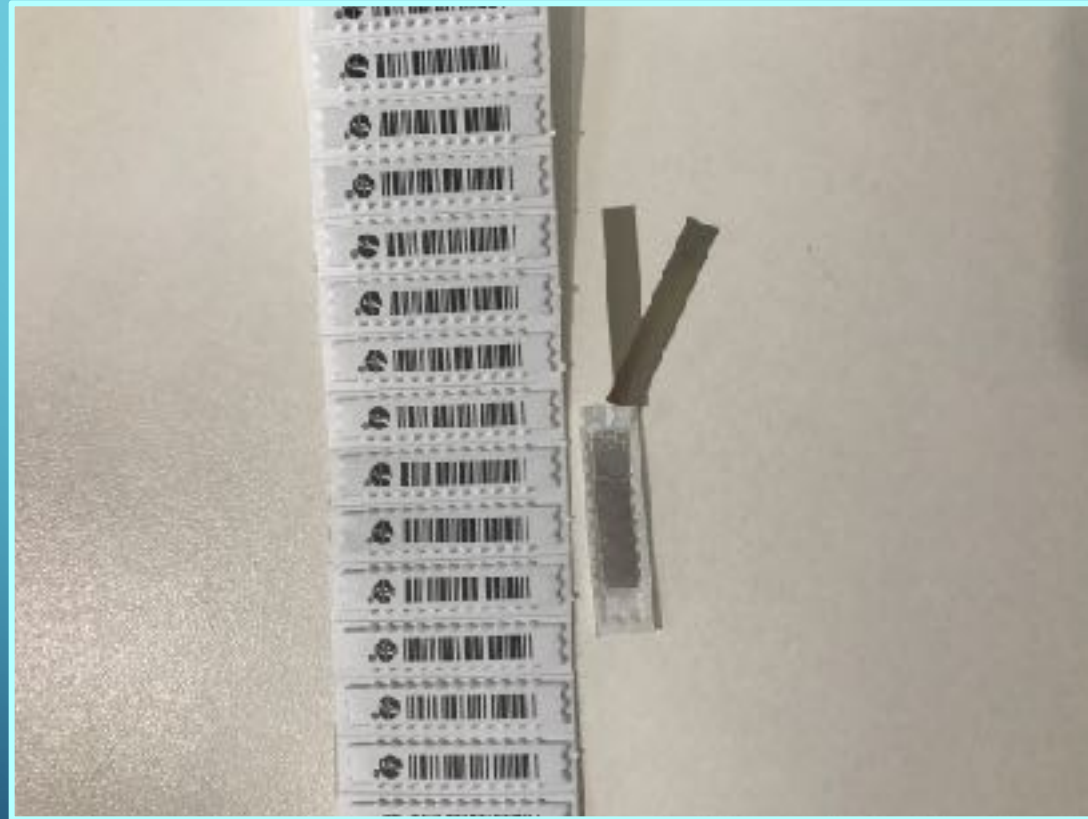
PADLOCK/CABLE SEALS



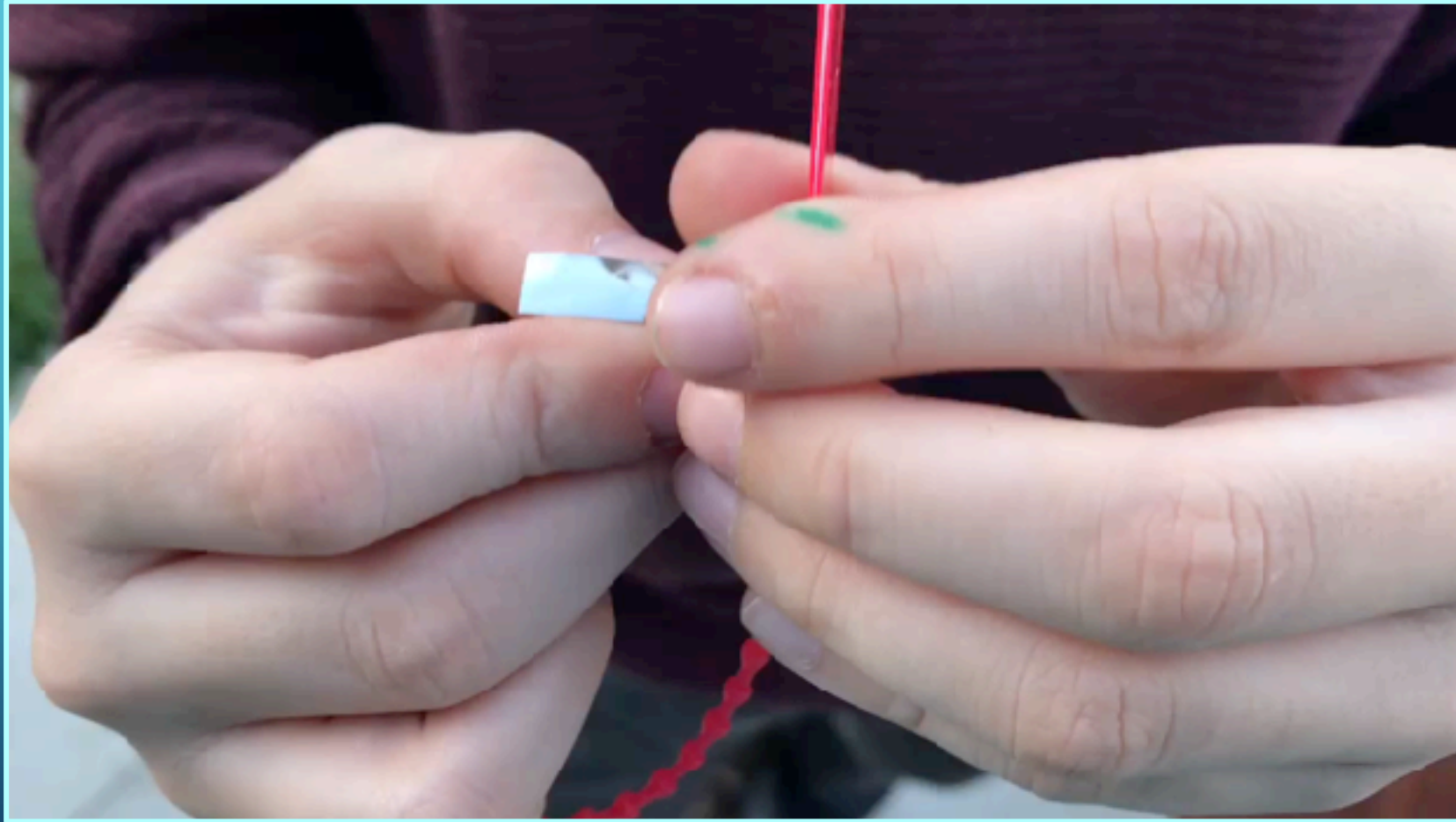
UNCLE DAVE'S TALENT (ONE OF THEM)



SHIMS



BYPASSING A CABLE TIE SEAL



CUSTOM MADE SHIMS



CUSTOM SHIM IN USE



4 LAYER TAMPER EVIDENT LOCK BOX CHALLENGE

- 4 different types of tamper evident seals
- 4 methods of removal we have talked about
 - Heat
 - Cold
 - Chemical
 - Electrolysis

THANK YOU FOR LISTENING

[HTTP://MOSANDBOO.COM](http://mosandboo.com)

@MROLDKINNY

@_B003Y_ (THEY ARE ZEROS IN MY TWITTER HANDLE 🤪)